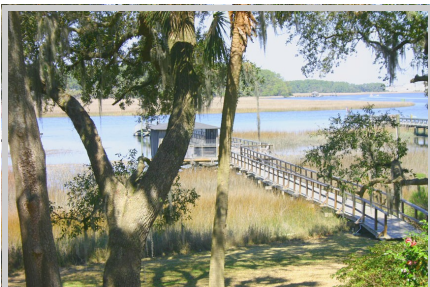
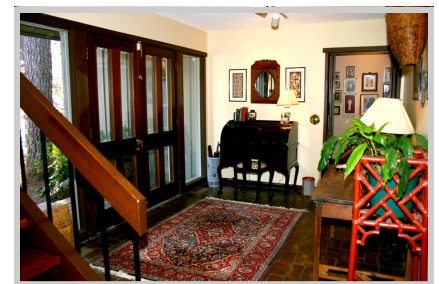


111 Herb River Drive

Dutch Island Neighborhood

Updated Deep Water Isle of Hope home in Dutch Island Gate on the Herb River with Dock. Beautiful Property with Expansive Views. Re-modeled Kitchen and Bathrooms.

Square Footage: 3,544
Bedrooms/Baths: 4 Bedrooms, 4 Full Baths
Lot Size: 1+ Acres
Price: \$1,289,000



Details:

- Rooms: Living Room, Dining Room, Den, Two Studies, Four Bedrooms, Four Full Baths, Kitchen, Kitchenette, and Porch

Features:

- Deep Water home in most desired neighborhood Isle of Hope that is inside the Dutch Island Gate
- Large lot with beautiful canopied oaks overlooking River that opens to Intra-Coastal Waterway
- Front of Home faces attractive common green space inside Dutch Island Entrance
- Wood Front Door with beveled glass and brick floor
- Antique Heart Pine Floors and gorgeous Savannah Grey Brick Fireplace
- Fabulous Living Room with exposed beams on Cathedral ceiling

- Dining Room with view and open to Kitchen
- Updated Kitchen with granite and raised paneled cabinet doors
- Views from Living Room, Dining Room, Kitchen, Master Bedroom, Guest Bedroom, Den/Family Room, and Porch
- Bar Area with Table and View
- View from porch is up the Herb River to Intra-Coastal Waterway
- Area Under Porch for entertaining family and friends
- Beautiful paneled study with built-ins
- New cabinet and granite countertop in powder bathroom
- New granite in master bathroom with master bed-room looking through oaks to River and access to Porch
- Den/Family Room has many built-ins with Kitchenette off Den.
- Dutch Island Amenities are Optional

Sally Lufburrow



912-844-0587 (cell)
912-598-0936 (office)